

UTEP DON HASKINS CENTER TECH SHEET

Staging

- (8) SICO (4' X 4') Decks
- (90) StageRight (4' x 8') Decks
- (50) SICO (4' X 8') Decks
- (16) ME 3750 Rolling Risers 8' x 12' x 48" x 78"
- (19) SICO Fold Set Support, 4' x 8' x 24" - 32"h
- (32) SICO Fold Set Support, 4' x 8' x 48" - 76"h
- (8) SICO Fold Set Support, 4' x 4' x 16" - 24"h
- (4) SICO Fold Set Support, 4' x 8' x 48" - 76"h
- (2) SICO Fold Set Support, 4' x 8' x 24" - 32"h
- (2) 2-step riser stairs
- (4) 3-step riser stairs
- (2) 4-step riser stair
- (2) 5ft Step SICO stairs
- (2) 6ft Stage Right stairs
- (9) Stage Right Z -HD 4' X 8' ,24"
- (4) Stage Right Fold & Roll Riser 4' x 8' ,24"
- (9) Stage Right - 4'x8', Reversible with Black TechStage 0.095"/Black Carpet Anodized Edge
- (2) Folding Adjustable 48"-78" , 8 step

Floor (see "Map A")

- Floor Dimensions 127' x 84'
- Floor is cut in at four corners, which affects clearances at upstage corners and FOH.

Rigging (See "Map B")

- Main Beam Height 54'
- Rigging Grid Height 62' (6' x 7' boxes)
- Capacity 50,000lbs per main beam, 5,000lbs per point
- Center-Hung 16'x16' speaker cluster (28' x 24' grid opening)

Power

Show Power

- 800A, 208v 3PH Located at the bottom of tunnel on SL side (50' to USC)
- Can be broken out into any combination up to 800A
- 200A service at FOH is part of this 800A breaker
- Isolated 400A, 208v 3PH Located at bottom of tunnel on SL side (50' to USC)
- 200A, 208v 3PH Located mid-tunnel, SL side (100' to USC)

Outside Power - Loading Area

- 200A, 208v 3PH Located top of tunnel, SR side (200' to USC) *See note below*
- This can be broken out into (2) 100A, 208v 3PH Located top of tunnel on SL side
- Combination of use can not exceed 200A
- 100A, 208v 3PH Located top of tunnel on SR side
- 50A, Single Phase Located top of tunnel on SR side
- 30A, 3 Phase Twist Lock Located top of tunnel on SR side

Production Lot Shore Power

- 200A, 120v/208v Main Lug Connection
- Can be broken out into (4) 50 A twist lock Single Phase connections
- (2) 20A Duplexes

Catering Power

- 50A, 208v Single Phase Located outside the tunnel on SL side by generator fence

Load In/Load Out (see “**Map D**”)

- Loading door 16’H x 20’W
- Tunnel Dimensions 220’ X 20’
- **No Dock**
- Trucks can be unloaded/loaded in driveway at top of tunnel (2 at a time), or a single truck can come down the tunnel.
- Buses and trucks park across the street from arena (Lot GR5), 1-100A, 208v, 3PH power service available (lugs)

For larger shows, trucks can be unloaded/loaded as “parking lot party” and can park in the road during this process. Street can be closed for load in/load out in order to facilitate but must be reopened after load in until doors for the show open, then can be closed again for load out truck positioning through load out

Dressing rooms (See “**Map E**” map)

- Dressing Room 1
 - 225 Sq.Ft; (2) Urinals, (2) Sinks, (2) Stalls, and (1) Group shower
- Dressing Room 2
 - 312 Sq.Ft; (2) Urinals, (2) Sinks, (2) Stalls, and (1) Group shower
- Dressing Room 3
 - 126 Sq.Ft; (1) Urinal, (2) Stall, and (1) Single shower
- Dressing Room 4
 - 341 Sq. Ft; Shares restroom with room 2
- Dressing Room 5
 - 113 Sq.Ft; (1) Stall, (1) Sink, (1) Single shower
- Dressing Room 6
 - 263 Sq.Ft; (2) Urinals, (2) Sinks, (2) Stalls, and (1) Group shower
- Dressing Room 7
 - 795 Sq.Ft; (2) Urinals, (2) Sinks, (2) Stalls, and (1) Group shower
- **No in house furniture**

Catering (See “**Map F**”)

- Refrigerators, Ice machine, tables and chairs available.
- Gordon Family Courtside Club (max capacity 134)
 - (4) High Cocktail tables
 - (15) High Cocktail chairs
 - (7) Low Top tables
 - (28) Low Top chairs
 - (10) Couch chairs
 - (1) Couch
 - (3) Coffee tables

- **This space is a no-road cases room**
- **Furniture must remain in the space as is**

Spotlights

- 4 Lycian Superstar 2.5 Xenon

General Info

- FOH is typically set side by side to maximize floor space.
- Rule of thumb for fork lifts - 1 fork per set of loaders, 1 for bottom of tunnel, 1 to push gear up tunnel for load out is the recommended method. (example: 12 loaders - 3 forks, 1 for tunnel push,
1 for bottom of tunnel to fork off stage = 5 Total
- **No ADA access to floor other than from tunnel, so all ADA patrons must enter via load in tunnel and shows must maintain a minimum of 4' ADA clearance on both sides of stage.**

For Production Advance, please contact:

General Manager: JORGE VAZQUEZ
Phone: (915) 747-7467
Email: vazquezj@utep.edu

Booking Director: JORGE VAZQUEZ
Phone: (915) 747-7467
Email: vazquezj@utep.edu

Ticketing Director: JULIO DE LA VEGA
Phone: (915) 747-6681
Email: jdelavega@utep.edu

FOH/Marketing Manager: BRANDON MARTINEZ
Phone: (915) 747-5623
Email: bgmartinez4@utep.edu

Production Advance/CAD: RICKY NICHOLS
Phone: (915) 747-6228
Email: rlnichols@utep.edu

BOH/Operations Manager: EFREN LICON
Phone: (915) 747-5699
Email: elicon10@utep.edu

Security/ Production Assistant Director: EVAN RUIZ
Phone: (915) 747-6225
Email: ecruiz@utep.edu

Local Catering: MARY BARRAZA - ENCORE CATERING
Phone: (915) 731-0215
Email: mary@encorecateringco.com

Merchandise/Concessions: JIM HARRISON - EVENT MERCH
Phone: 2145021760
Email: jim@heventmerch.com

Local Labor/AV: STEVE LIGORIO
Phone: (915) 562-0131
Email: southcoastaudio@mac.com

Additional Merch/Concessions: GINA SANCHEZ - EVENT MERCH
Phone: 2142677169
Email: gina@heventmerch.com

Settlement: LINDA BRASWELL
Phone: (915) 747-7468
Email: lbraswell@utep.edu

Runners: ERIKA ARELLANO – Upstage
Phone: (915) 497-8698

- Venue does not source vehicles, must go direct for securing vans/vehicles.
- If Runner Payment is to be through settlement, prior advance notice needs to be made.

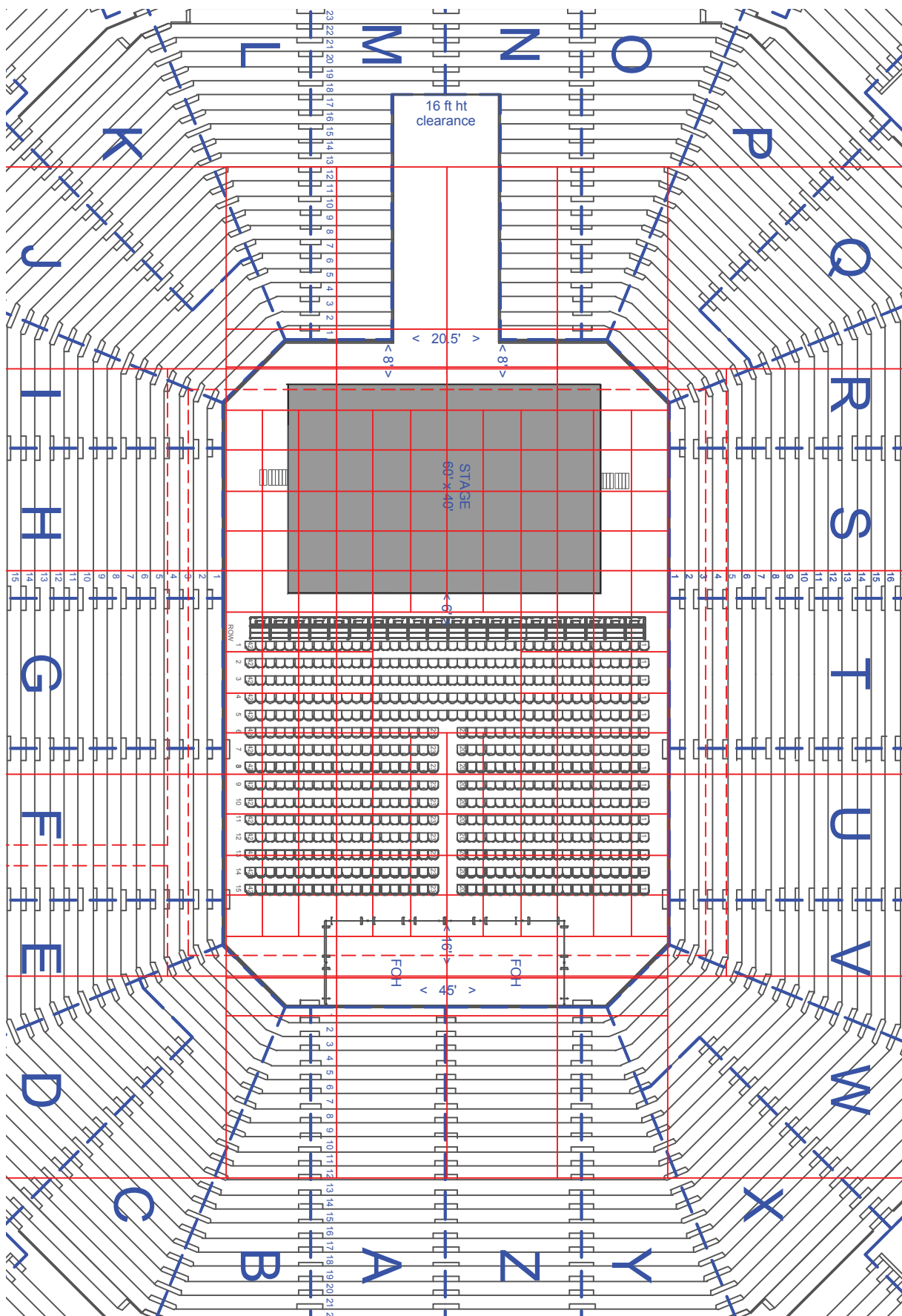
Always CC Jorge Vazquez for TICKETING and also CC:

Brandon Martinez - bgmartinez4@utep.edu

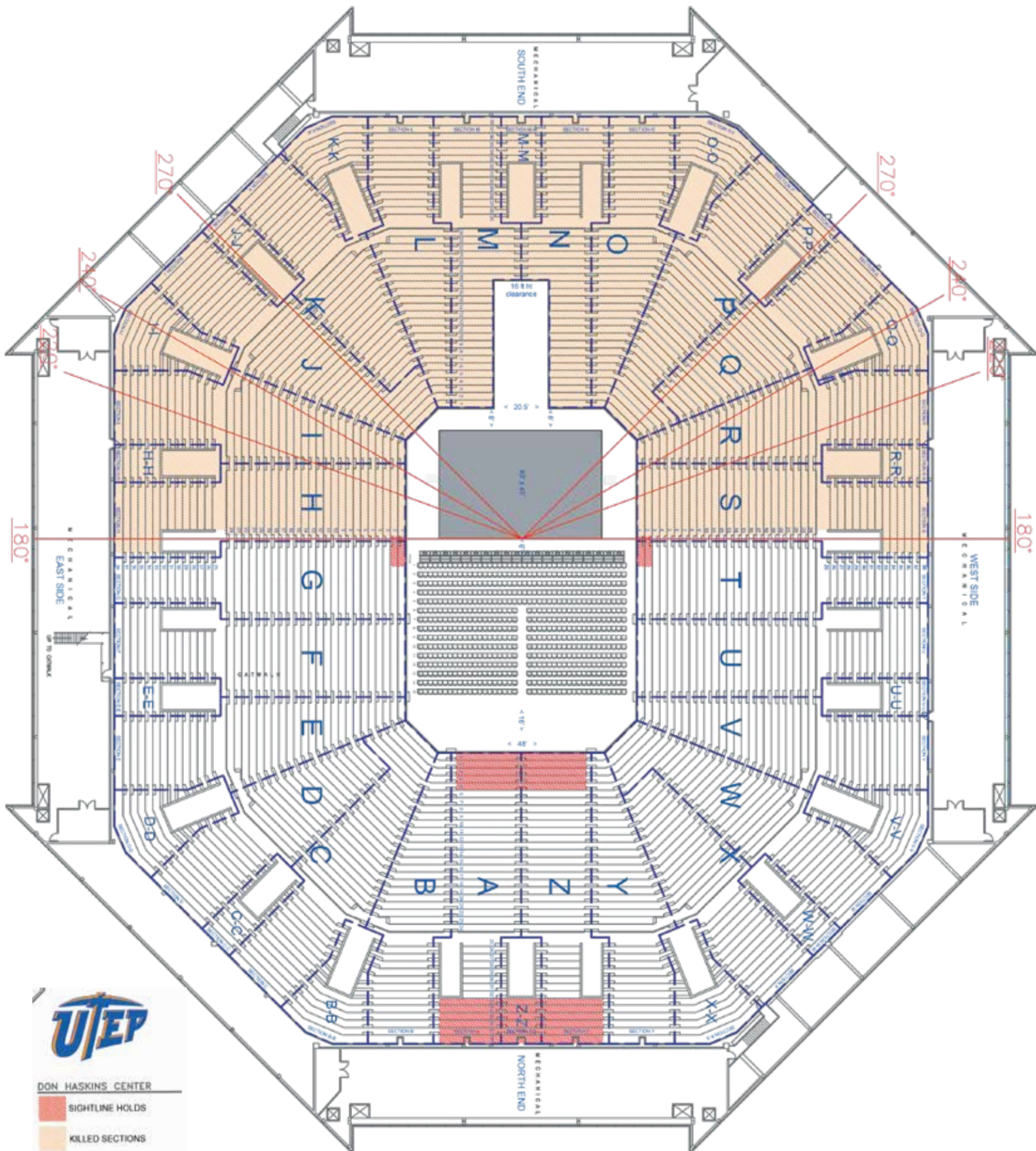
Julio de la Vega - jdelavega@utep.edu

Ana Ruiz - akruiz@utep.edu

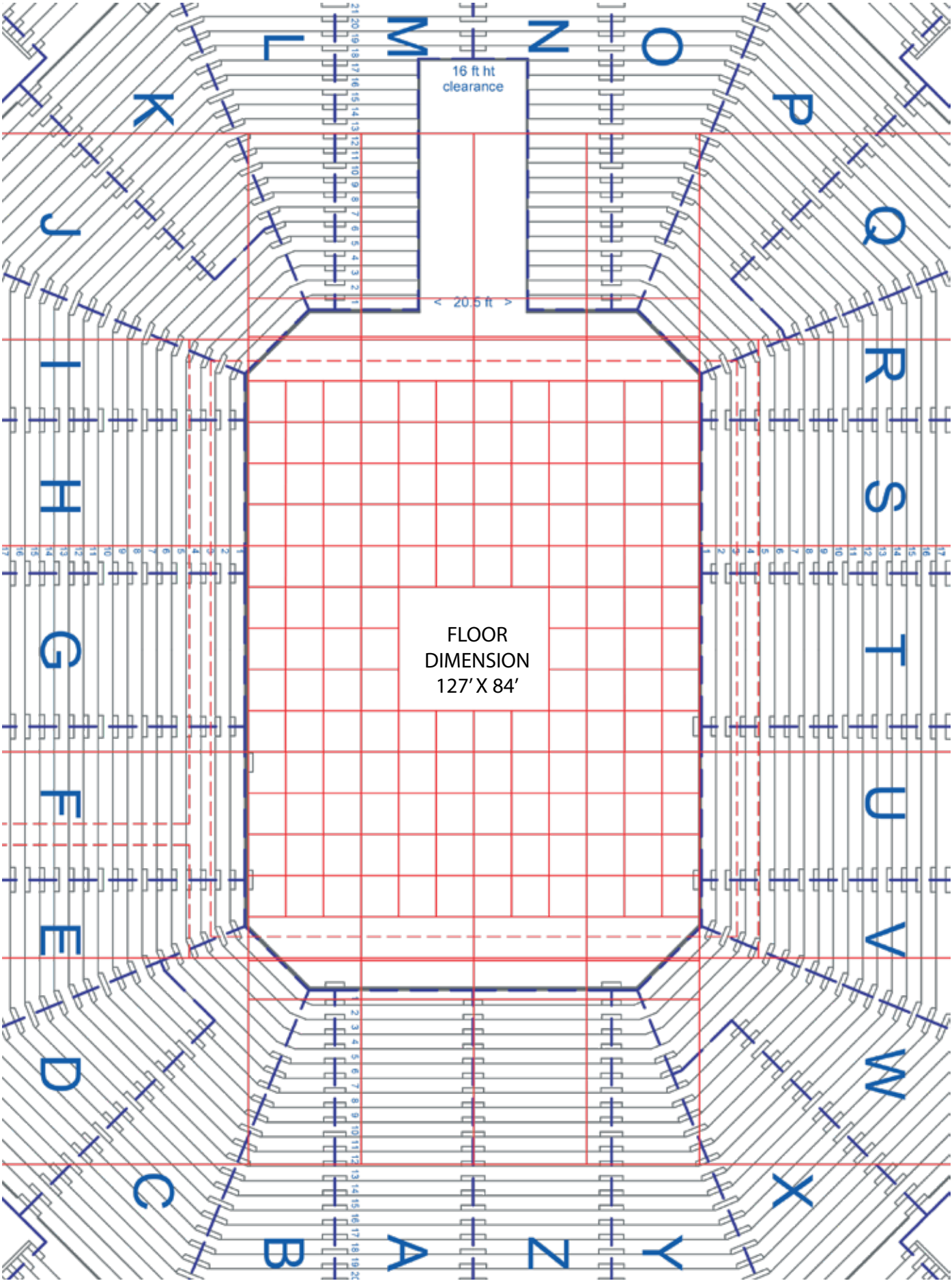
MAP A STANDARD STAGE & FOH LAYOUT



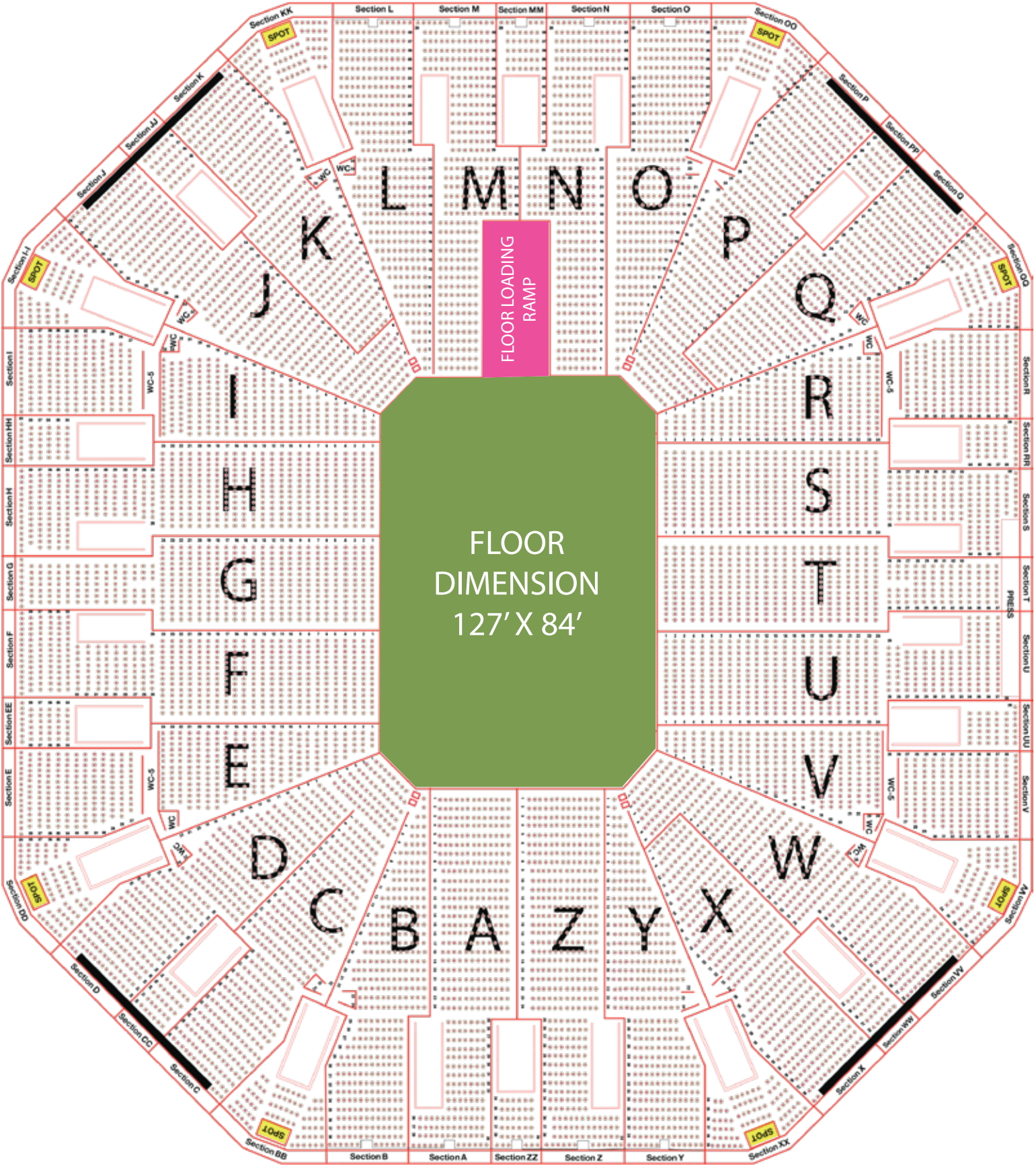
MAP A (continued) STANDARD 40X60 STAGE WITH 180 SIGHTLINE



MAP B RIGGING GRID



MAP C VECTOR SEATING MAP WITH FLOOR



- CONCRETE RAMP
- CONCRETE FLOOR
- SPOTLIGHTS LOCATIONS

MAP D PRODUCTION LOT (GR5)



----- BARRICADE ROAD CLOSURE

MAP E DRESSING ROOM & CATERING FLOORPLAN

- TUNNEL
(DIMENSION 220' X 20')
- DRESSING ROOMS
- LAUNDRY ROOM
*(1) WASHER (1) DRYER
- GORDON FAMILY
COURTSIDE CLUB
(CATERING)
- VENUE OFFICES
- POLICE ROOM
- PRODUCTION
OFFICE 1
- PRODUCTION
OFFICE 2
- PYRO ROOM





**Dressing Room
1, 2, 3, 4 Corridor**



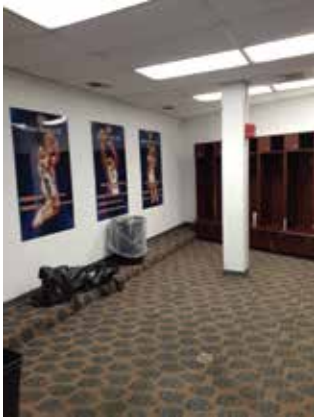
**Dressing Room 1
Furnished**



Dressing Room 1



**Dressing Room 2
Back View**



**Dressing Room 2
Entrance View**



**Dressing Room 2
Side View**



**Dressing Room 2
Furnished**



**Dressing Room 3
Back View**



**Dressing Room 3
Entrance View**



**Dressing Room 3
Furnished**



Dressing Room 4



**Dressing Room
5, 6, 7 Corridor**



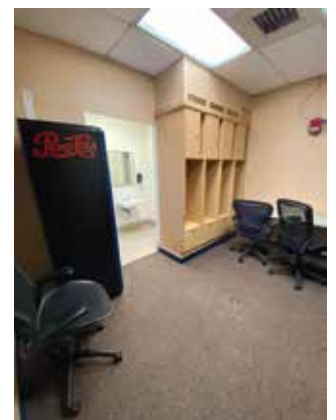
Dressing Room 5



**Dressing Room 5
Side view**



**Dressing Room 5
Furnished**



Dressing Room 6



**Dressing Room 7
Extra Back Room View**



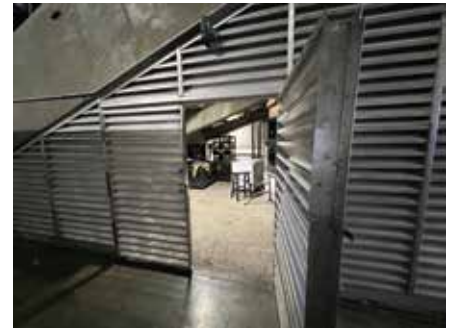
**Dressing Room 7
Side View**



**Dressing Room 7
Furnished**



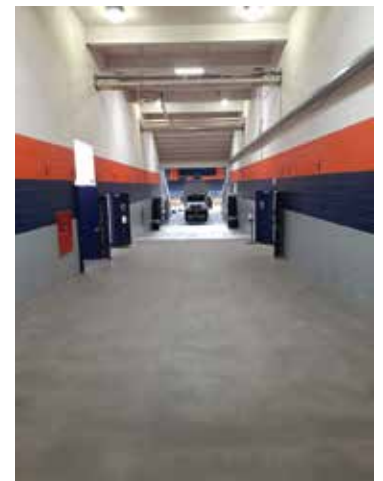
**Dressing Room 7
Room**



Top Tunnel Entrance



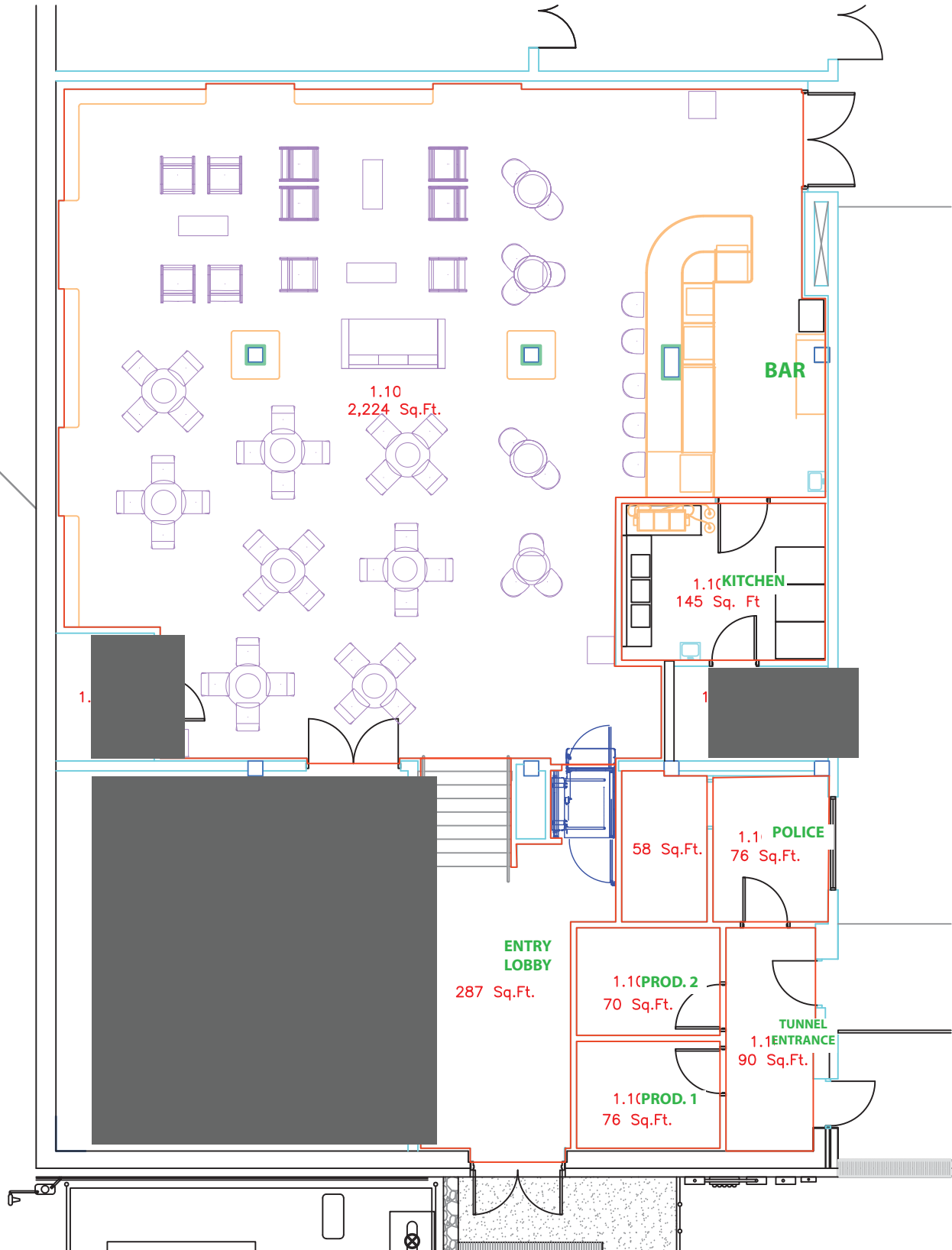
Top Tunnel Entrance



Mid Tunnel Entrance

MAP F CATERING/HOSPITALITY FLOOR PLAN (Capacity 134)

- This space is a no-road cases room
- Furniture must remain in the space as is
- ■ MECHANICAL ROOMS (not usable)



1-5 SIDE STAGE

DISTANCE FROM FLOOR TO ROWS

